

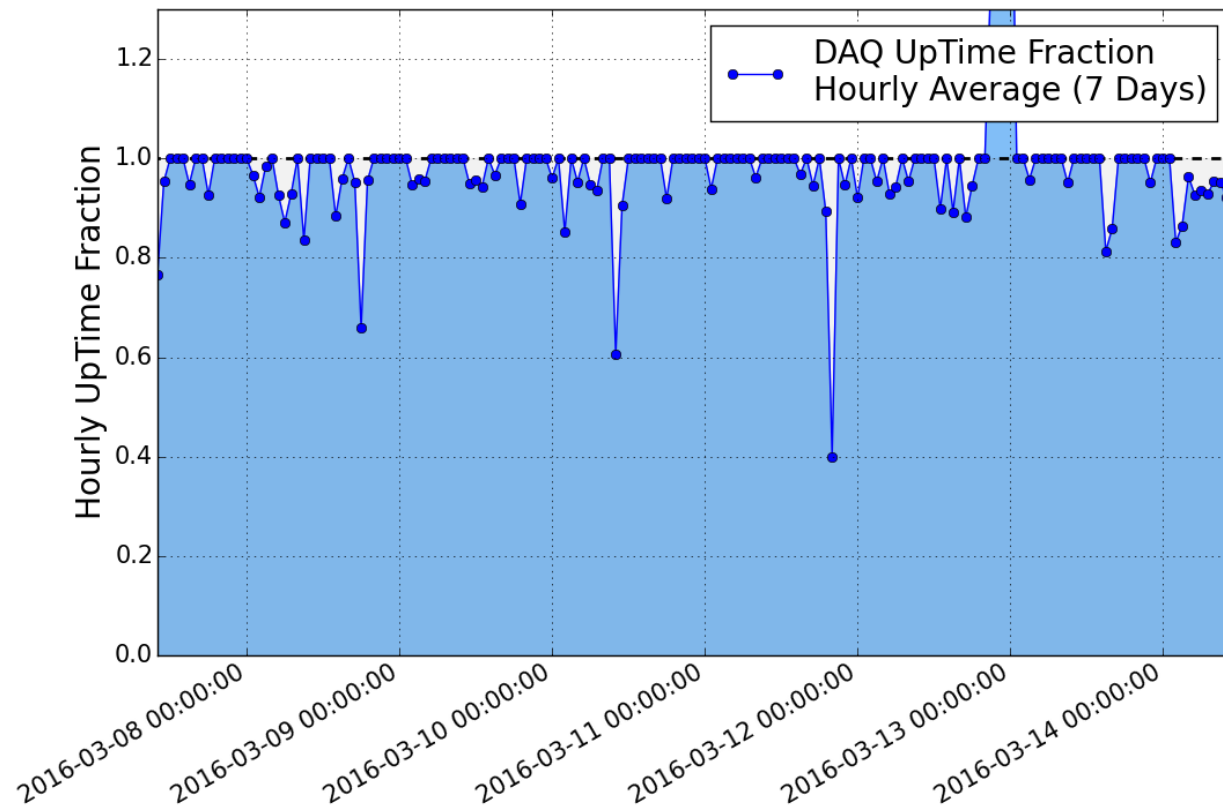
MicroBooNE Status

JOEL MOUSSEAU, UNIVERSITY OF MICHIGAN

ALL EXPERIMENTER'S MEETING

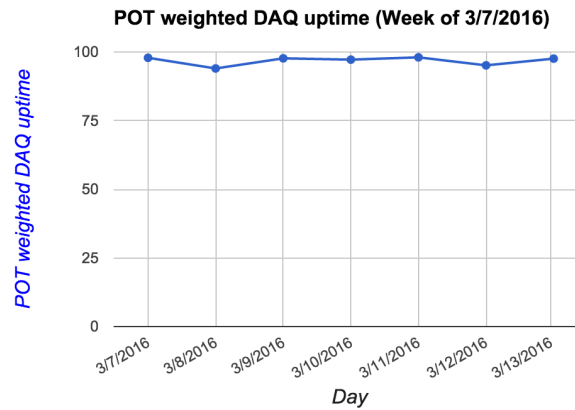
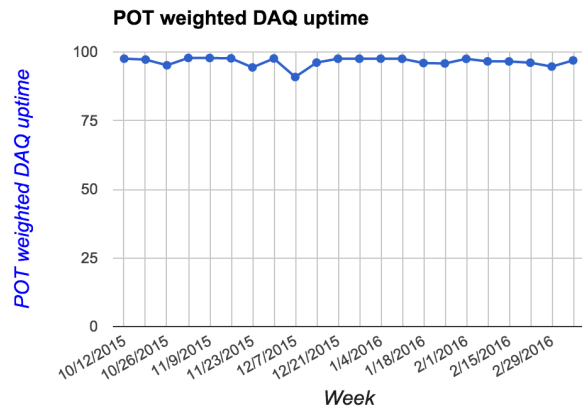
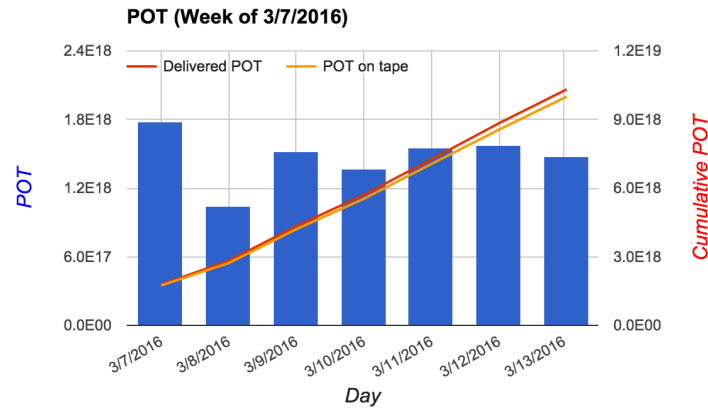
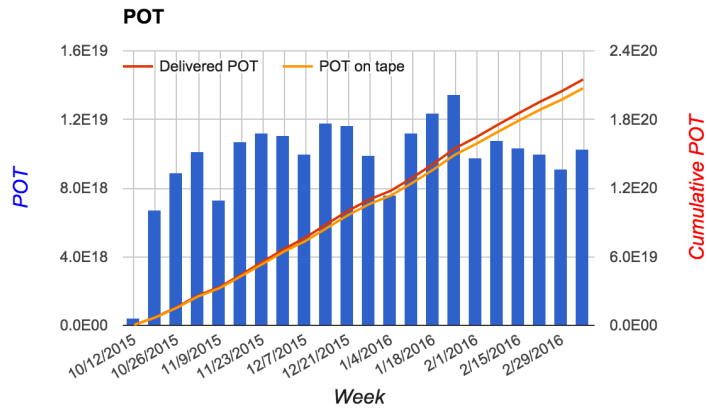
3/14/2016

DAQ Uptime



- DAQ uptime has been very good the past seven days.
- Daylight savings time creates a season spike in uptime.

POT Delivered / Recorded



- Weekly POT delivered: 1.03×10^{19}
- Weekly POT recorded: 1.00×10^{19}
- 96.9% POT weighted uptime this week.

GPS Issues

- We have been seeing intermittent jumps in our GPS time with respect to local time.
- This time information is used to synchronize detector data and beam data.
- MicroBooNE does not have a far detector, so this signal is not necessary to synchronize two different detectors.
- Power cycling the machine with the GPS card (seb10) did not fix the problem as it has in the past.
- Testing with the GPS card in the test stand gave similar problems, so we think it might not be the GPS card but instead something upstream, such as the cable or antenna.
- Currently, we are using an NTP server to synchronize detector and beam data. This has been working so far.
- NTP time is being monitored with GPS time.

Summary

- Good uptime throughout the week.
- GPS timing issue is being worked on.
- In the meantime, we are using an NTP server for synchronizing beam and detector data without incident.