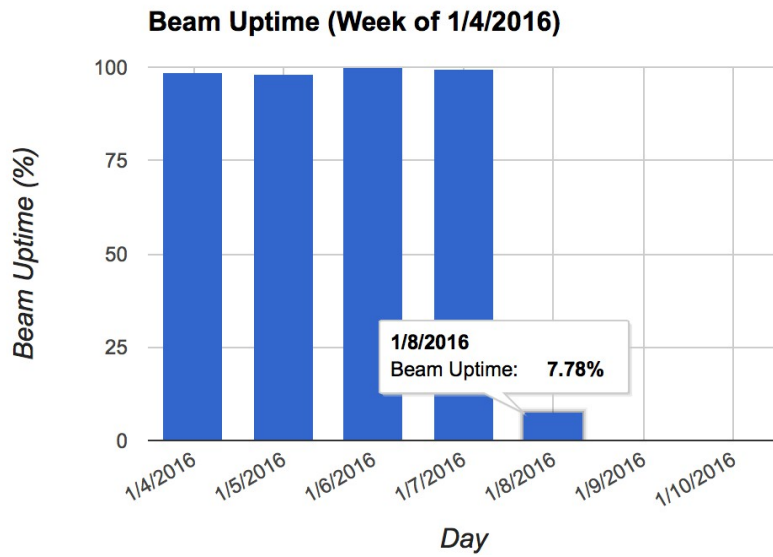

MicroBooNE Status Report

Nick Graf
University of Pittsburgh

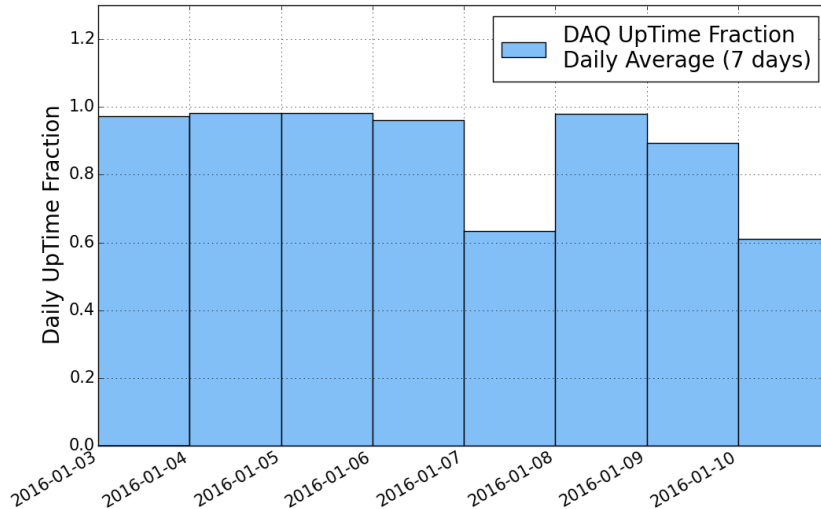
Beam vs. DAQ Uptime



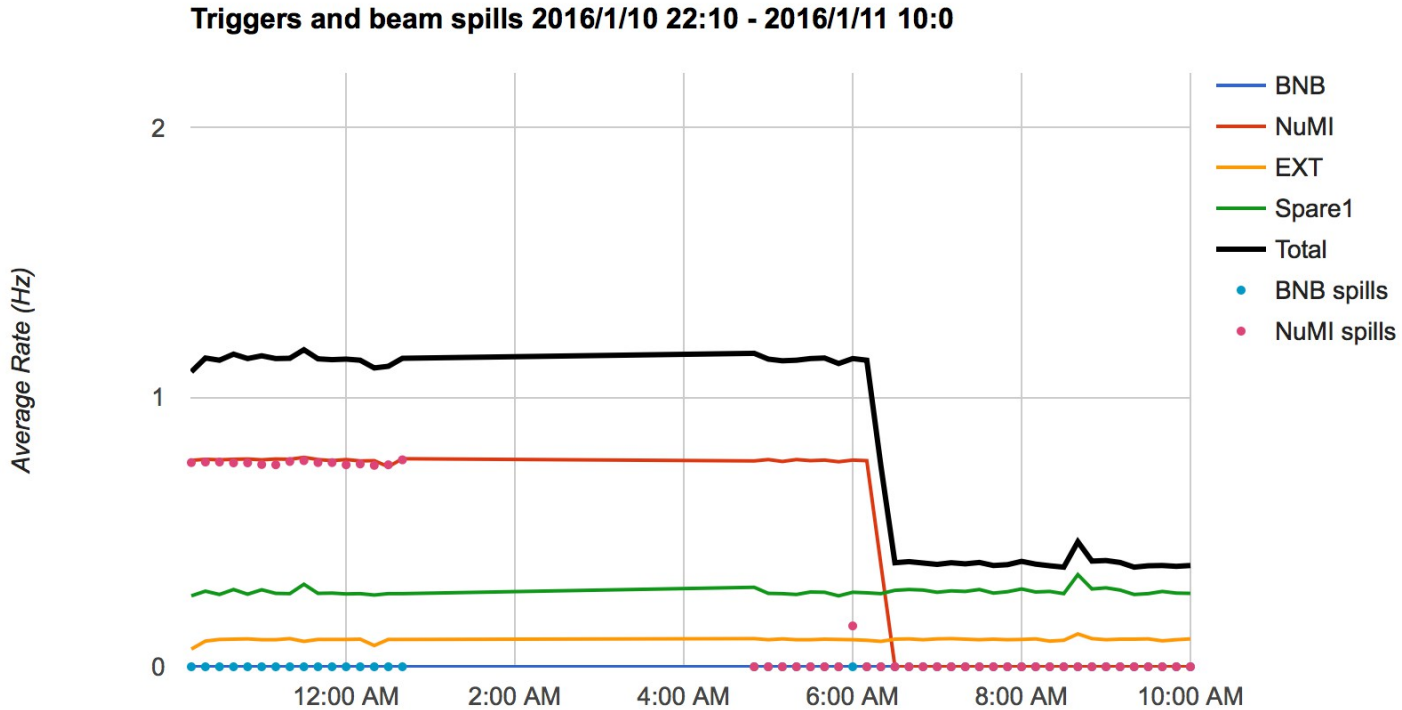
High DAQ uptime (>97%) until Friday, Jan 8 when BNB went down

Electronics work and trigger studies affected DAQ uptime

Otherwise still taking NuMI triggers...

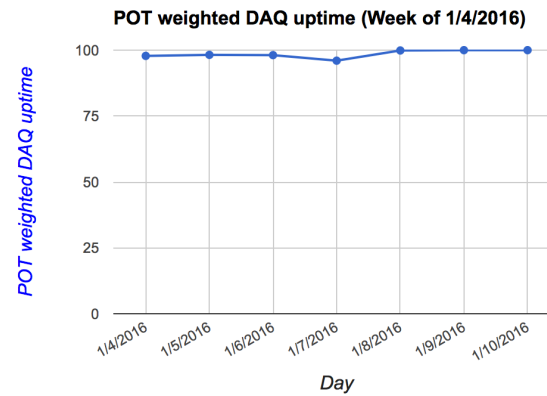
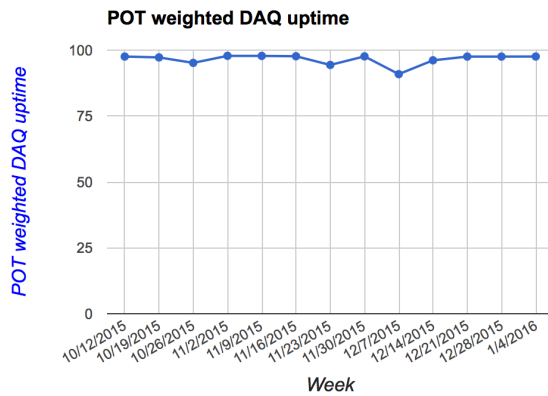
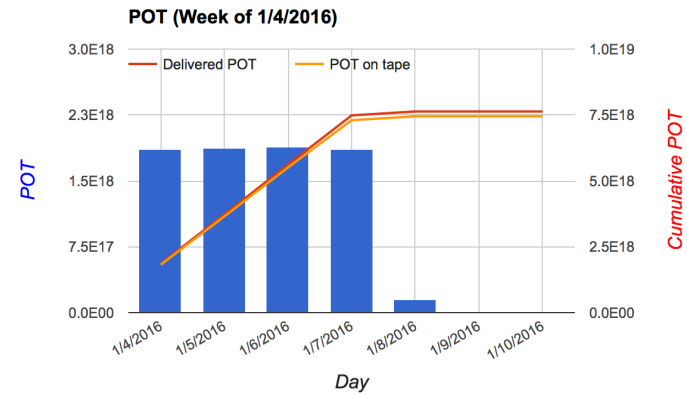
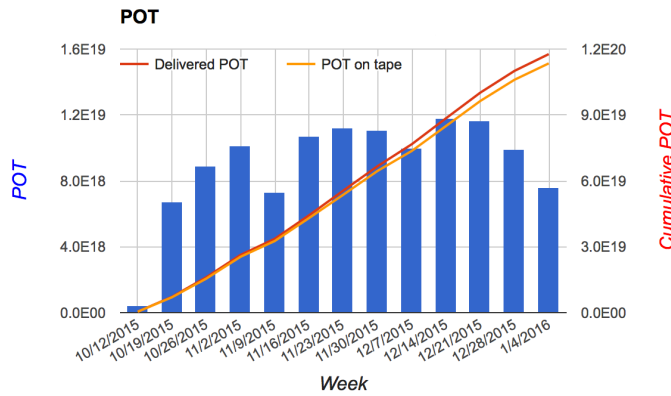


Triggers



NuMI went down just after 6 AM today. Came back around noon.

PoT on Tape



POT weighted uptime high until Friday when BNB went down.

Summary

- Ongoing work on PMT trigger
 - Make use of beam downtime
 - Expect to be working within a couple weeks
- BNB has been down since early Friday morning
- NuMI down for ~6 hours earlier today
- DAQ uptime last week was 97.6% while BNB was on